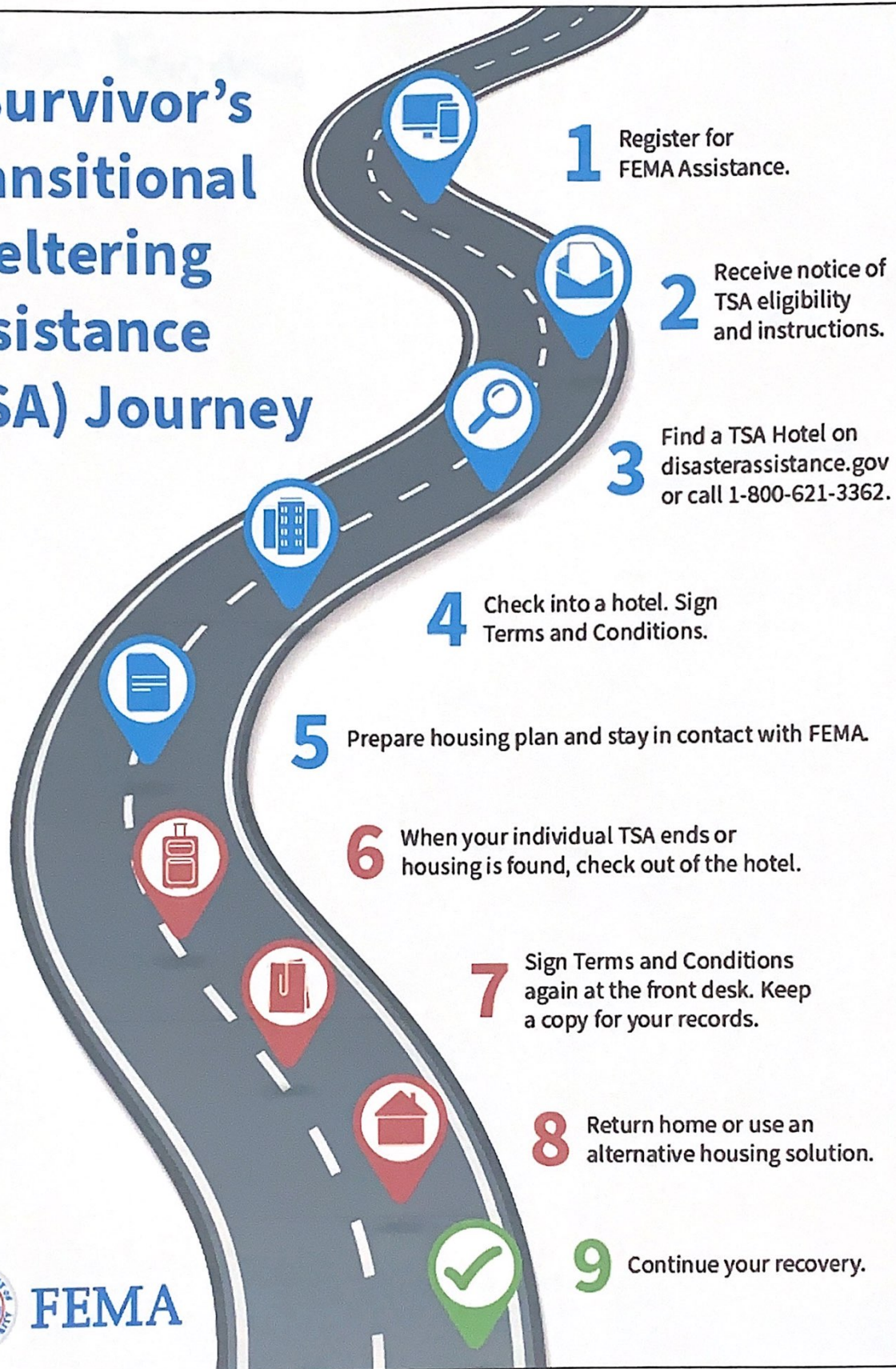


A Survivor's Transitional Sheltering Assistance (TSA) Journey



1 Register for FEMA Assistance.

2 Receive notice of TSA eligibility and instructions.

3 Find a TSA Hotel on disasterassistance.gov or call 1-800-621-3362.

4 Check into a hotel. Sign Terms and Conditions.

5 Prepare housing plan and stay in contact with FEMA.

6 When your individual TSA ends or housing is found, check out of the hotel.

7 Sign Terms and Conditions again at the front desk. Keep a copy for your records.

8 Return home or use an alternative housing solution.

9 Continue your recovery.



FEMA